



MONTHLY MEMBERSHIP PROGRESS REPORT

District 5M 9

Results as of: 04/30/2018

GMT: MICHAEL MOLENDIA

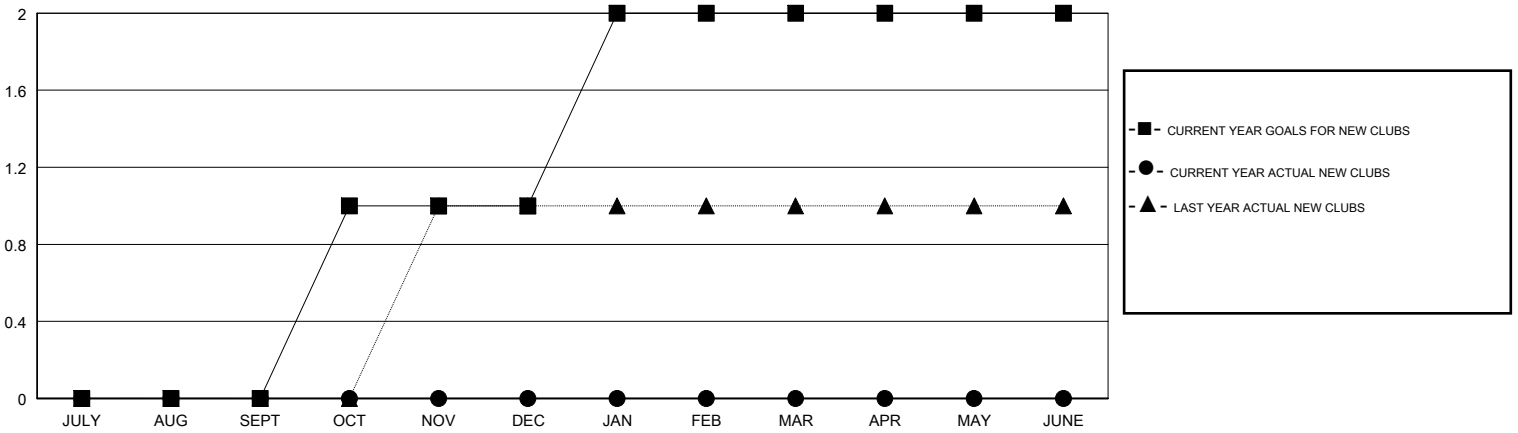
LOCATION MINNESOTA

GMT CA

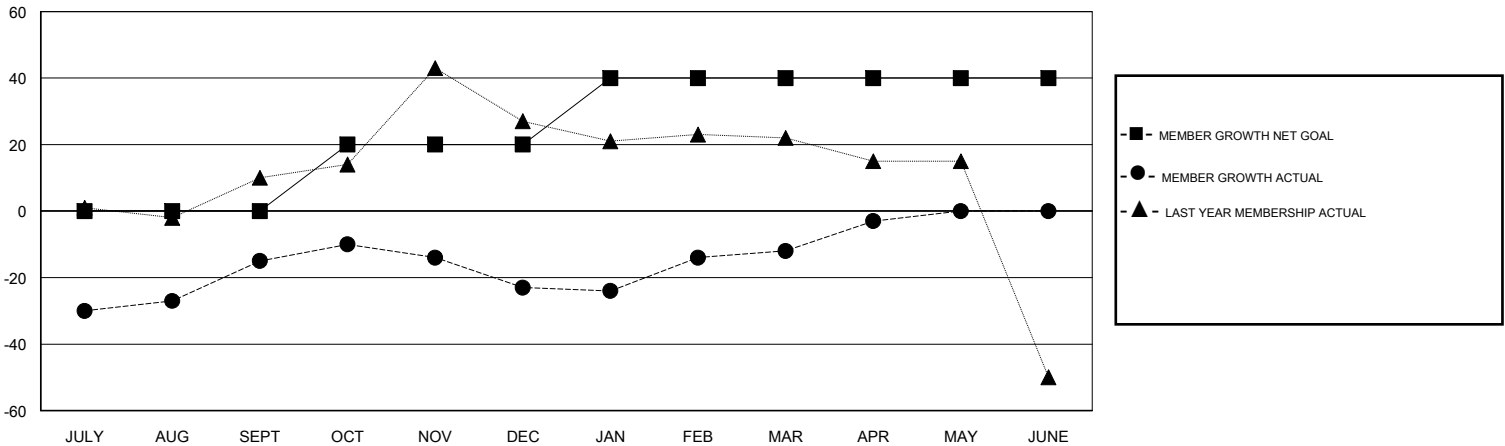
Clubs			
RESULTS FOR 2017-2018			
QUARTER	NEW CLUB GOAL	NEW CLUBS	DROPPED CLUBS
JULY/AUG/SEPT	0	0	0
OCT/NOV/DEC	1	0	0
JAN/FEB/MAR	1	0	0
APR/MAY/JUNE	0	0	0

Members			
RESULTS FOR 2017-2018			
QUARTER	MEMBER GROWTH NET GOAL	MEMBER GROWTH ACTUAL	DROPPED MEMBERS ACTUAL (including transfers)
JULY/AUG/SEPT	0	73	78
OCT/NOV/DEC	20	54	50
JAN/FEB/MAR	20	51	38
APR/MAY/JUNE	0	24	13

GOALS AND ACTUAL NEW CLUBS CUMULATIVE



GOALS AND ACTUAL MEMBERS CUMULATIVE



DROPPED CLUBS: 0

48 CLUBS OF 67 ADDED 1 OR MORE NEW MEMBERS

GENDER DISTRIBUTION	
MALE	1,436 (63.29%)
FEMALE	833 (36.71%)
Women Percentage Fiscal Year Goal: 38%	

DROPPED MEMBERS	
DECEASED	40
CLUB CANCELLED	0
OTHER	140
TOTAL	180

[CLICK HERE FOR CUMULATIVE MEMBERSHIP DATA](#)

TOTAL FAMILY UNIT MEMBERS	734
FAMILY MEMBERS PAYING HALF DUES	371